

**INDUSTRIAL PORT COMPLEX**

# **PECÉM**

**THE RIGHT PLACE FOR YOUR BUSINESS  
TO OBTAIN INCREASED GLOBAL SCALE.**











# PECÉM INDUSTRIAL PORT COMPLEX. PREPARED TO GROW WITH YOUR COMPANY.

Designed from the outset to be a port complex – and not just a port – the Pecém Industrial Port Complex (CIPP) was born at the forefront of the industry, offering one of the few offshore terminals in Brazil and a large 32,000 acres yard dedicated to the installation of an industrial park that will serve the State of Ceará and its regional catchment area.

Today, the CIPP's infrastructure includes a world-class port terminal, an Export-Processing Zone, a steelmaker,

an area reserved for the installation of a refinery, an intermodal freight terminal, two thermal power plants, and a large industrial park especially dedicated to the steel, petrochemical, energy and logistics industries.

The CIPP is strategically located to provide highly ambitious companies with all the infrastructure facilities they need to further increase their global scale, quickly and at competitive prices.

# PORT OF PECÉM.

## THE ADVANTAGE YOU NEED TO EXPAND THE BORDERS OF YOUR BUSINESS.

The Pecém port terminal has been growing steadily and fast since its start-up in 2002. Regarded as one of the most efficient and sustainable ports in Brazil, the Port of Pecém became one of the best strategically located in the entire world after completion of the new Panama Canal.

Its design took into account the most modern concepts in terms of environmental safety for offshore ports and secured the required space for future expansions.

In recent years, the Port of Pecém has been improving its structure to further expand its cargo handling and loading capacity.

The construction of three new berths will increase the port's handling capacity.

The combination of a complete infrastructure for ocean and short-sea shipping operations, along with its strong competitive advantages, has allowed the rapid growth of the Port of Pecém and its consolidation as a cargo hub and distributor for major international markets.



### Port of Pecém in numbers:

Capacity  
for handling  
**750,000 TEUs**  
per year

**1<sup>st</sup> place**  
in export of  
fruits in the country

**14 to 18 meters**  
of natural draft depth

### Competitive advantages:

It is a deep-draft port closest to  
the Panama Canal

Very attractive port fees

Strategic geographic location and short navigation  
time to Europe and the United States

Able to harbor large container ships

Previously scheduled docking

Fast loading and unloading thanks to its modern  
portainers

Located outside of large urban centers



Port of Pecém's storage yard



Porto do Pecém Geração de Energia S/A



Pecém Steel Company (CSP)



Ship-to-Shore (STS) Cranes





# EXPORT-PROCESSING ZONE – EPZ

As the first Export-Processing Zone to operate in Brazil, the EPZ Ceará spans over 14,000 acres within the Pecém Industrial Port Complex and is an industrial district with tax incentives where companies enjoy tax and foreign exchange exemptions (they are not required to convert proceeds from exports into the local currency). One of the main advantages of the EPZ Ceará is the attraction of foreign exporters and the possibility for the companies installed within the CIPP to compete on equal terms with their international competitors.

Over  
**14,000**  
acres



# PECÉM STEEL COMPANY



Pecém Steel Company (“Companhia Siderúrgica do Pecém”, a company owned by Vale, Dongkuk, and Posco) is the first integrated steelmaker based in the Brazilian northeastern region and already boosts the economic growth of the State of Ceará. By 2018, after completion of the second stage, it is expected to produce 6 million tons of steel plates of high metallurgical quality. These products – made with cutting-edge technology and standards – will be sold in the international market or will supply the Metallurgical and Mechanical Industrial Park to be implemented within the CIPP.



**3 million  
tons**  
of steel plates  
manufactured in its 1<sup>st</sup> stage





# EXPORT-PROCESSING ZONE – EPZ

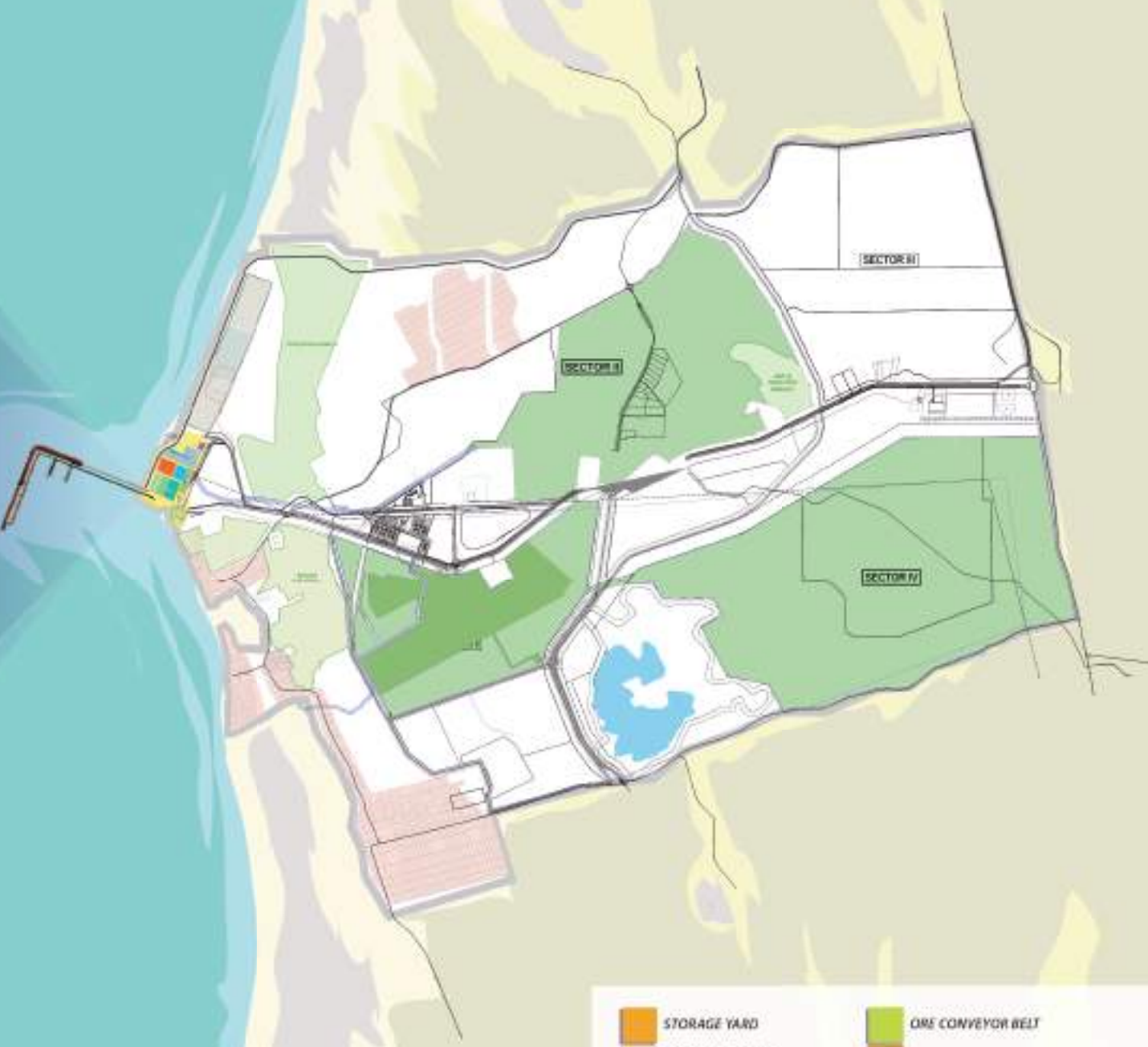
As the first Export-Processing Zone to operate in Brazil, the EPZ Ceará spans over 14,000 acres within the Pecém Industrial Port Complex and is an industrial district with tax incentives where companies enjoy tax and foreign exchange exemptions (they are not required to convert proceeds from exports into the local currency). One of the main advantages of the EPZ Ceará is the attraction of foreign exporters and the possibility for the companies installed within the CIPP to compete on equal terms with their international competitors.

Over  
**14,000**  
acres



## PORT OF PECÉM

## PECÉM INDUSTRIAL AND PORT COMPLEX



- |                 |                           |
|-----------------|---------------------------|
| STORAGE YARD    | ORE CONVEYOR BELT         |
| RAILROAD ACCESS | COAL CONVEYOR BELT        |
| ADMINISTRATION  | BRIDGE UNDER CONSTRUCTION |
| MAIN GATE       | SOLID BULKS PIER          |
| SCANNER         | LIQUID BULKS PIER         |
| UTILITIES BLOCK | MULTIPURPOSE TERMINAL     |





**GOVERNMENT OF THE  
STATE OF CEARÁ**  
*Department of Infrastructure*

Esplanada do Pecém, s/n - Pecém • São Gonçalo do Amarante - Ceará - CEP: 62674-906 • + 55 85 3372.1500 • [www.cearaportos.ce.gov.br](http://www.cearaportos.ce.gov.br)